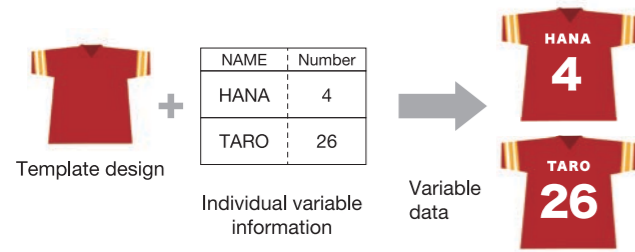


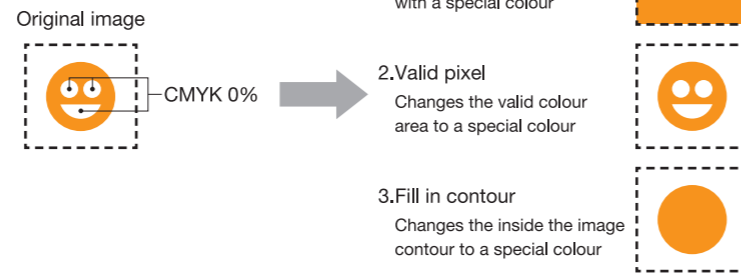
# Raster Link 7

More useful and functional  
Variable print function - create individualised items



## Special colour plate generation

The new [Fill in contour] option for reliable operation in DTF print.  
Vector data and CMYK=0% object to be converted to special colour plate.  
EPS, PS, PDF formats are supported.



## Mimaki Cloud Technology PICT

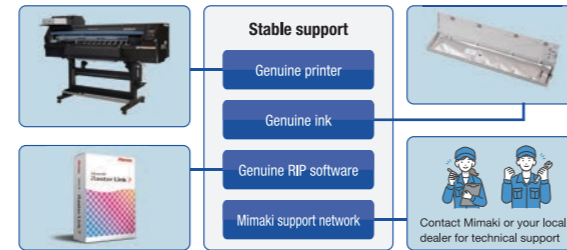
PICT allows users to monitor printer operation and ink usage remotely. It supports better planning by providing real-time data on operational status and performance. PICT helps with scheduled maintenance and preparing for ink refills, ensuring smooth and efficient production.

## MRA (Mimaki Remote Access)

Monitor ink levels, heater temperature, and receive notification alerts on a smartphone or Windows-based PC. The machine can be operated remotely with the same user experience as using the actual control panel.

## Reliable Mimaki Solutions

Mimaki provides reliable, genuine printers, inks, and RIP software. For a complete system, additional equipment like film, hot melt powder post-processing, and heat press transfer machines may be required. Evaluate all components to meet your needs.



## Specifications

	TxF150-75	TxF300-75	TxF300-1600
Print head	On-demand piezo head		
Printing resolution	720 dpi, 1,440 dpi		
Ink	Type / Colour	Heat transfer pigment ink PHT50 (C, M, Y, K, W)	
	Capacity	600 ml Ink pack (500 ml only for white)	
Ink circulation function	Only white		
Maximum print width	800 mm	1,610 mm	
	810 mm	1,620 mm	
Media	Thickness	1.0 mm or less	
	Roll weight	45 kg (99.2 lb) or less	
Interface	Ethernet 1000BASE-T, USB2.0 Hi-speed		
Power	Body: AC 200~240V ± 10%, 50/60 Hz ± 1 Hz x 1		
Power consumption	AC 200~240V: 1.2 kW or less	AC 200~240V: 1.3 kW or less	AC 200~240V: 1.75 kW or less
	VCCI class A, FCC class A, ETL IEC 62368-1, CE Marking (EMC, Low voltage, Machinery directive, and RoHS), CB, REACH, Energy Star, RCM, KC		
	Certifications		
Dimensions (WxDxH)	1,965 × 700 × 1,392 mm		2,783 × 700 × 1,392 mm
Weight	126 kg		166 kg

## Ink specifications • Ink array

Water-based pigment ink for DTF: PHT50 specifications	
Ink name	PHT50
Ink colour	5 colours (C, M, Y, K, W)
Packing form	Aluminium pack
Capacity	600 ml (C, M, Y, K), 500 ml (W)
Certification	Eco Passport

## Ink colour set :

TxF150-75



TxF300-75 / TxF300-1600



Ink options\*

\*Options

**OPT-J0572: Additional 4-Cartridge Option (TxF300)**

Add white ink cartridges to allow long-run production

• Some examples shown in this catalog are artificial renderings • Specifications, designs and dimensions shown in this catalog may be subject to change without notice for technical improvements • The corporate and merchandise names in this catalog are the trademarks or registered trademarks of the respective corporations • Inkjet printers use extremely fine dots, so colours may vary slightly after replacement of print heads • Also note that when using multiple printer units, colours could vary slightly from one unit to another due to slight individual differences • Please note that descriptions and data in this catalog are as of September 2024.

For  
TEXTILES &  
APPAREL

Direct-to-Film Inkjet Printer

# TxF Series

TxF150-75 / TxF300-75 / TxF300-1600



## MIMAKI EUROPE BV

Stammerdijk 7E, 1112 AA Diemen, The Netherlands  
www.mimakieurope.com | Tel. : +31 20 4627640  
@MimakiEurope

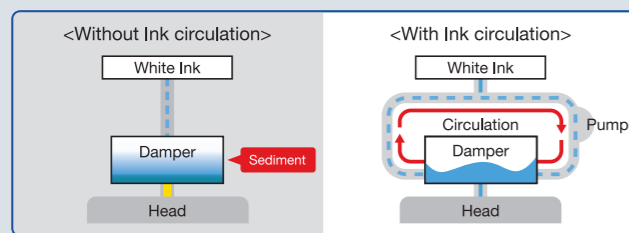
# A safe and stable DTF Printer (Direct to Film) with **Mimaki's** core technologies

Because it is Mimaki

**The TxF Series** (TxF300-75, TxF300-1600, and TxF150-75) is a range of DTF printers equipped with Mimaki's core technologies and innovative features for stable operation and reliable production. Quality work can be easily performed by anyone, regardless of the skill level of the operator. Plus, we provide ongoing support for your work.

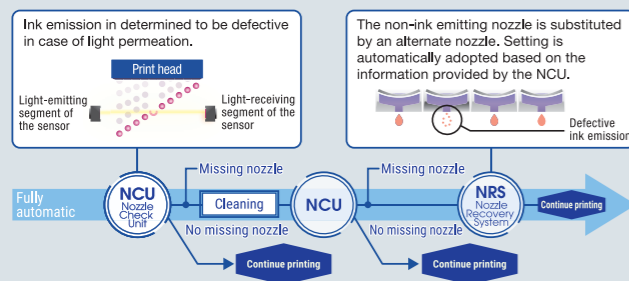


## Mimaki's core technologies for stable operation



**MCT Version2** (Mimaki Circulation Technology Version2)  
MCT enables circulation throughout the ink route, including the damper\*. This ensures stable white ink ejection, preventing frequent nozzle cleaning and ink waste.

\*A filter above the head



**NCU** (Nozzle Check Unit)  
NCU automatically checks for defective nozzles and starts a cleaning cycle to recover them.

**NRS** (Nozzle Recovery System)  
NRS automatically assigns operational nozzles when an outage is detected, enabling continuous production until a service personnel arrives.

\*The function may be limited by missing-nozzle position and amount

## Dependable Mimaki genuine heat transfer pigment ink PHT50\*

The aluminium pack for degassed inks implements stable ink ejection by reducing gas contamination of the ink and preventing nozzle defects. Compared to ink bottles, the use of plastic is reduced, which also reduces environmental impact.



PHT50, Mimaki's first heat transfer water-based pigment ink is OEKO-TEX® ECO PASSPORT certified, an international standard for the safety of textile products. PHT50 is a safe and secure ink that meets the criteria for ecologically responsible textile manufacture.

\*Environmentally friendly ink that meets the world's top safety standards

## Three models for different productivity needs

Three models are available to match different productivity and investment needs. The entry-level **TxF150-75** offers a solid starting point, while the **TxF300-75** boosts productivity by up to 3 times. The wider **TxF300-1600** further increases productivity by 30% with its 1,600mm print width.

	<b>Pro model</b> <b>TxF300-1600</b> Width: 1,610mm		<b>Large T-shirts 84 pcs/h</b> Production mode 720x720 6P 10.0 m <sup>2</sup> /h
	<b>Pro model</b> <b>TxF300-75</b> Width: 800mm		<b>Large T-shirts 62 pcs/h</b> Production mode 720x720 6P 7.5 m <sup>2</sup> /h
	<b>Entry model</b> <b>TxF150-75</b> Width: 800mm		<b>Large T-shirts 22 pcs/h</b> Production mode 720x720 10P 2.6 m <sup>2</sup> /h

\*Print condition: Graphics of 360 mm (W) x 280 mm (H) are printed side by side on 800 mm-wide DTF film.

Because it is DTF

DTF (Direct to Film) printing eliminates the need for fabric selection, plate making and pre-treatment, increasing production efficiency.

DTF printing works with a wide range of fabrics, including blended fabrics, polyester, and cotton. It's also capable of printing on dark-coloured fabrics with greater colour density. Moreover, DTF avoids the time-intensive process of plate creation required in screen printing and the weeding needed in traditional rubber heat transfer methods.

## Comparison with silk screen, heat transfer rubber sheet, and DTG

### Silk screen method



Requires the intensive process of plate creation. Difficult to print in full colour.

### Heat transfer rubber sheet method



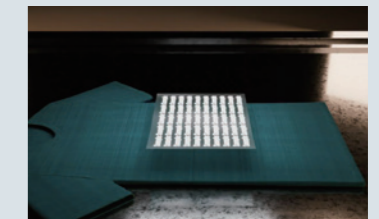
Takes time for weeding.

### DTG (Direct To Garment) method



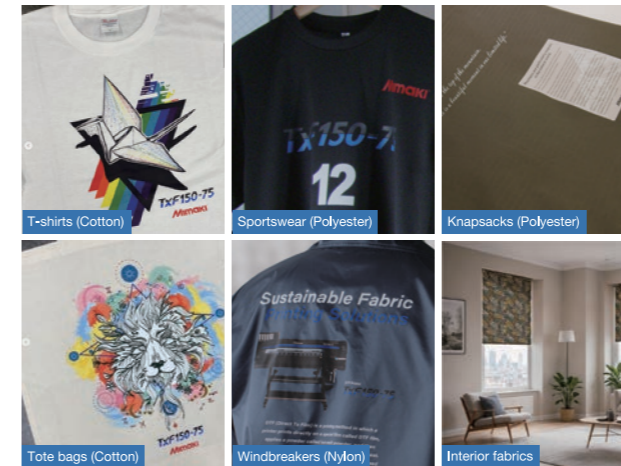
Manual handling by the operator at every printing step.

### DTF (Direct To Film) method



No plates needed. No weeding. Printing processes can operate while unattended.

## Applications Decorate various fabrics using just one DTF print system



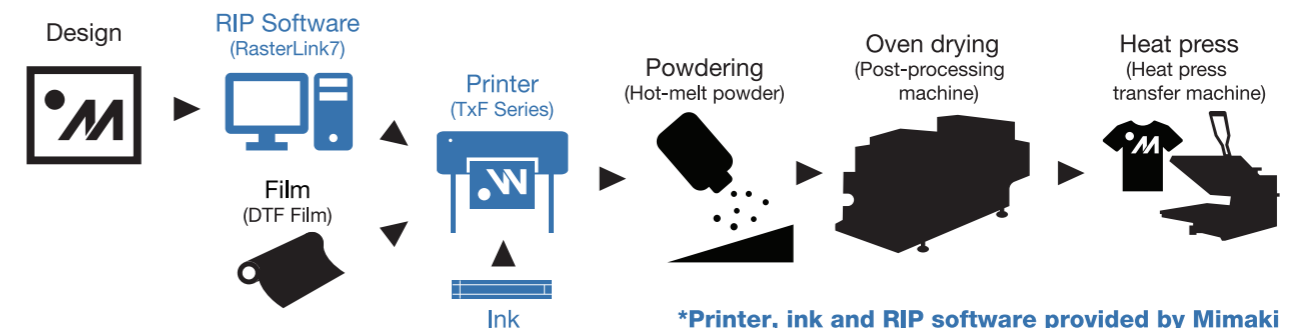
### Wider Width, More Applications

With a print width of 1,600mm, the wider TxF300-1600 model expands application possibilities to include interior fabrics like curtains and floor mats.

## What is DTF?

DTF printing provides an easy and affordable process for decorating apparel, most commonly T-shirts. The design is initially printed directly onto a special transfer film, which is then sprinkled with hot-melt powder. Once heated and dried, the transfer sheet is ready to be applied to the fabric using a heat press.

\*Mimaki offers the printer, the ink and the RIP software. Please contact local Mimaki distributors about DTF film, hot-melt powder, powder shaker, post-processing machine and heat press transfer machine.



\*Printer, ink and RIP software provided by Mimaki