

## New generation output software with 16 bit rendering (a standard item)

The high performance RIP software is designed to fully enable all advanced features of the JV33 series printers



## RasterLink Pro<sup>5</sup> SG

- 16 bit rendering eliminates tone jump and produces fine colour reproduction
- Different images can be freely nested on the RIP
- Various editing functions support effectively and productively the high print quality
- Able to network in hybrid environments where Windows and Macintosh co-exist

## Specifications

Item		Specifications	
		JV33-130	JV33-160
Print head		On-demand Piezo head (180 nozzles x 8 lines) x 1 head	
Maximum printing width		1,361 mm (53.5")	1,610 mm (63.3")
Printing resolution		540, 720, 1440 dpi	
Print Mode (Scan x Feed)		540 x 720 dpi, 540 x 900 dpi, 540 x 1080 dpi	
		720 x 540 dpi, 720 x 720 dpi, 720 x 1080 dpi, 720 x 1440 dpi	
		1440 x 1440 dpi	
Ink	Type	Exclusive solvent ink: ES3 ink, SS21 ink	
		Exclusive aqueous pigment ink	
		Exclusive dye sublimation ink	
	Capacity	4-colour mode: 440 cc cartridge x 2/colour, 880 cc/colour	
		6-colour mode: 440 cc cartridge x 1/colour, 440 cc/colour	
		8-colour mode: 440 cc/colour (CMYKLCm), 220 cc/colour (W & Si)	
Media	Size	1,371 mm (53.9")	1,620 mm (63.9")
	Roll weight	Less than 25 kg (55.1 lbs.)	
	Printing surface	Face out	
	Roll inside diameter	2 inch or 3 inch	
Media cutting		Cutting on Y direction by cutter at the head	
Media heater		Triple stage intelligent heater (Pre/Print/Post)	
Media take-up device		Roll take-up device (standard), inside / outside selectable	
Interface		USB 2.0	
Applicable standard		VCCI Class A, FCC Class A, UL 60950-1	
		CE Marking (EMC Directive, low voltage directive), CB report	
Power		AC 100 ~ 120V ± 10%, AC 220 ~ 240V ± 10%, 50/60 Hz ± 1 Hz	
Power consumption		Less than 1,440 VA	
Operating environment		Usable temperature: 20°C ~ 35°C (64 ~ 95°F), Humidity: 35 ~ 65%Rh (no condensation)	
Dimensions (W x D x H)		2,289 x 739 x 1,424 mm (90.1" x 29.1" x 56.1")	2,538 x 739 x 1,424 mm (99.9" x 29.1" x 56.1")
Weight		145 kg (320 lbs.)	160 kg (353 lbs.)

## Supplies

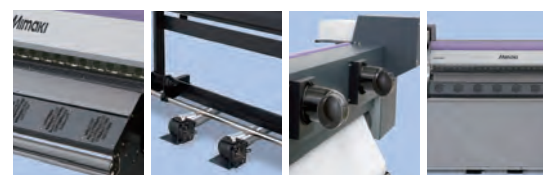
Item		Item No.
SS21 Solvent ink	440 cc	SPC-0501 Y/M/C/K/LM/LC
	220 cc	SPC-0504 Y/M/C/K/LM/LC
ES3 Eco solvent ink	440 cc	SPC-0440 Y/M/C/K/LM/LC
	220 cc	SPC-0443 W/Si
Aqueous pigment ink	220 cc	SPC-0494 Y/M/C/K/LM/LC
	440 cc	SPC-0584NK/K/RK/BLM/Y/LBL/LM
Sb52 dye sublimation ink**	2 litres*	SPC-0585NK/K/RK/BLM/Y/LBL/LM
Wiper kit 33S	10 pcs	SPA-0134
Waste ink bottle (2L)	1 pc	SPA-0117
Cutter blade assy	1 pc	SPA-0107
MS cleaning cartridge	220 cc	SPC-0294
Head cleaning cartridge	220 cc	SPC-0188S

\* 2 litre ink packs can be used with the bulk ink system

\*\* Sb52 ink has three types of black ink: Normal black (NK), Deep black (K) and Reddish black (RK)

## Option

Item		Item No.
MBIS (Mimaki Bulk Ink System)	JV33-130/160	OPT-J0210
Drying and exhaust unit 130	JV33-130	OPT-J0129
Drying and exhaust unit 160	JV33-160	OPT-J0130



1. Drying fan 2. Exhaust fans 3. Rear fans 4. Exhaust curtain

"Drying and exhaust unit" includes all of 1, 2, 3, and 4.



## JV34-260 Super Wide Format Inkjet Printer

Increased productivity and high print quality at an accessible price

- Max. resolution of 1440 dpi
- 30 m<sup>2</sup>/h (540 x 720 dpi)
- Print width: 2,632 mm
- Best price for its features
- Newest print head technology
- Solvent or dye sublimation model

\* Some of the samples in this folder are artificial renderings • Specifications, design and dimensions stated in this folder may be subject to change without notice (for technical improvements, etc.) • The corporate and merchandise names written in this folder are the trademarks of the respective corporations • Inkjet printers print using extreme fine dots, so colours may vary after replacement of the printing heads, also note that if using multiple printer units, colours could slightly vary from one unit to other unit due to slight individual differences • Compositor's errors reserved

**Mimaki**

Mimaki Europe BV

Stammerdijk 7E, 1112 AA, Diemen, Netherlands

Tel. +31 (0)20 462 76 40

Fax. +31 (0)20 462 76 49

www.mimakieurope.com

info@mimakieurope.com

@MimakiEurope

Partner:

**JV33series**  
JV33-130 / JV33-160

**Mimaki**



Award winning wide format printer, the JV33 Series

# Superior Performance, Best Return on Investment



\* Maximum printing width

SOLVENT  
DYE SUB

2 SIZES  
AVAILABLE

1440  
DPI

4/6/8  
COLOURS

17.5 M<sup>2</sup>/H  
TOP SPEED

11.9 M<sup>2</sup>/H  
STANDARD

White Ink  
Silver Ink

Unattended  
Printing

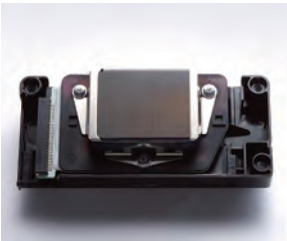
MARKET  
SIGN GRAPHICS



# High quality and high speed. Ultimate cost performance achieved by JV33 Series.

Available in two sizes (137 and 162 cm), the award winning JV33 Series offers a superb mix of high quality output, high speed printing, and user friendly operation at an affordable price, achieving the ultimate cost performance.

## Ultra-high resolution and high speed printing



### High speed print head for excellent performance

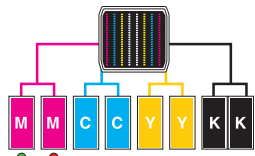
With its increased print head accuracy, the JV33 delivers truly high quality print of 1440 dpi. In addition, the improved ink firing frequency has increased the print speed by 30% over the JV3 series.

### Print Speed

Model		High speed mode 540 x 720 dpi 4 pass Bi-directional			Standard mode 540 x 1080 dpi 6 pass Bi-directional			High quality mode 720 x 1440 dpi 8 pass Bi-directional		
JV33-160	4 colour	4 pass	17.5		6 pass	11.9		8 pass	7.4	
	6 colour	8 pass	9.0		12 pass	6.1		16 pass	3.4	
JV33-130	4 colour	4 pass	16.7		6 pass	11.4		8 pass	7.1	
	6 colour	8 pass	8.6		12 pass	5.8		16 pass	3.2	

(unit : m<sup>2</sup>/hour)

## Unattended continuous printing



In case of Magenta / a red light is displayed when a cartridge is out of ink the machine switches automatically to a new cartridge

### Uninterrupted Ink Supply System (UISS)

UISS for continuous printing is standard on JV33. The JV33 can utilize two cartridges per colour in 4-colour mode. When an ink cartridge runs out, another cartridge begins supplying ink and helps prevent running out of ink. A maximum of 880 cc ink per colour can be loaded at one time. Ink cartridges can be changed during printing.

\* UISS cannot be used in 6-colour and 8-colour mode.

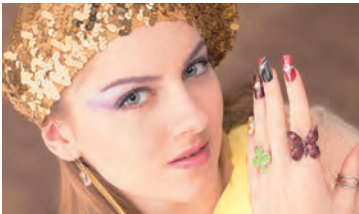


### Mimaki Bulk Ink System (MBIS)

for high volumes and lower ink costs (option)

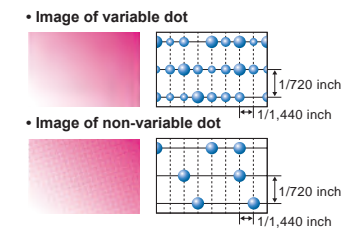
The bulk ink system is an eco-friendly ink system that produces less waste while achieving continuous printing. It uses 2-litre ink packs and achieves as stable and reliable ink ejection as printing solely with cartridges. It is possible to use both 2-litre ink packs in combination with regular 220/440 cc cartridges.

## State of the art inkjet technology



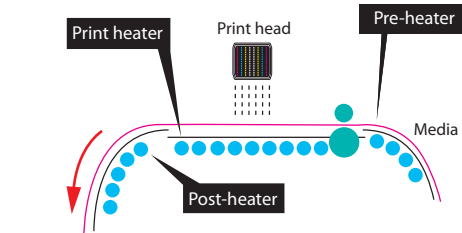
### Piezo Inkjet system

Precise control of ink firing reproduces details of photo image at a maximum resolution of 1440 dpi. Even edges of 4-point text are printed sharp and clear.



### Variable dot technology

By producing dots in three different sizes, smooth high resolution graphics are created without grainy appearance.



### Triple stage intelligent heater

A triple stage intelligent heater automatically heats up the media to the appropriate temperature, improving the performance of ink. The mounted post-heater quickens drying time and thus enables a fast take-up of the media.



## Wide Format Printer of The Year

The JV33 Series was chosen by the European Digital Press association as "the best wide format solvent printer up to 1.6 m of 2008".



## Various inks for wider range of graphics

### Four types of inks available

The two solvent inks feature high scratch resistance, high density, and wide colour gamut. You may also select aqueous pigment ink or dye sublimation ink at the time of installation.

Aqueous Ink		Solvent Ink	
	<b>Pigment ink</b> Ink which has high light fastness and can reproduce vivid and delicate colour tones.		<b>SS21 solvent ink</b> Fast drying ink provides the ability of printing on various types of media with high scratch resistance.
	<b>Dye sublimation ink</b> Fast drying and high density ink for sublimation transfer to polyester substrates.		<b>ES3 eco-solvent ink</b> Virtually odorless and user-friendly ink that does not require any special ventilation.

For both SS21 ink and ES3 ink

For ES3 ink only

### White Ink

**Producing more vivid graphics**  
The "White Ink Overlay Print", Mimaki's exclusive innovation, allows for simultaneously white and full colour printing on transparent or opaque substrates, as well as realizes a beautiful finish with accurate overlay.



### Silver Ink

**Stunning metallic effects**  
Shining silver colour gives your prints a metallic appearance. In combination with standard full colours, bronze and gold and other metallic colours can be printed. Silver ink is used in 8 colour mode only.

## Wide range of applications\*



### Solvent ink

Backlit signs, floor graphics, labels, posters, vehicle wrap, high quality stickers, window signage.

### Dye sublimation ink

Transfer printing on polyester based materials: flags, hanging displays, roll screen, soft signage, sportswear and t-shirts.

### Aqueous pigment ink

Indoor graphics.

\* Choose either solvent or aqueous ink at the time of installation.

## Stable print quality

### Head height adjustment

Head height can be adjusted to either 2 mm or 3 mm according to the media thickness. For the aqueous ink model, head height adjustment of either 4 mm or 5 mm\* is available.

\* Adjustment by technician is required.

## Mimaki's ultimate Print & Cut solutions



Create an efficient print and cut combination with a CG Series cutting plotter.

**Sizes: 75 - 160 cm**



The CJV30 Series offers printing and cutting in one machine.

**Sizes: 60 - 160 cm**